

WanXL Analyzer Software

Combine the world-proven WanXL Software with any ParaScope WAN product and take command of a powerful multi-functional network analyzer. Use it for real-time monitoring, simulating, emulating, bit error testing, protocol analysis, and much more.

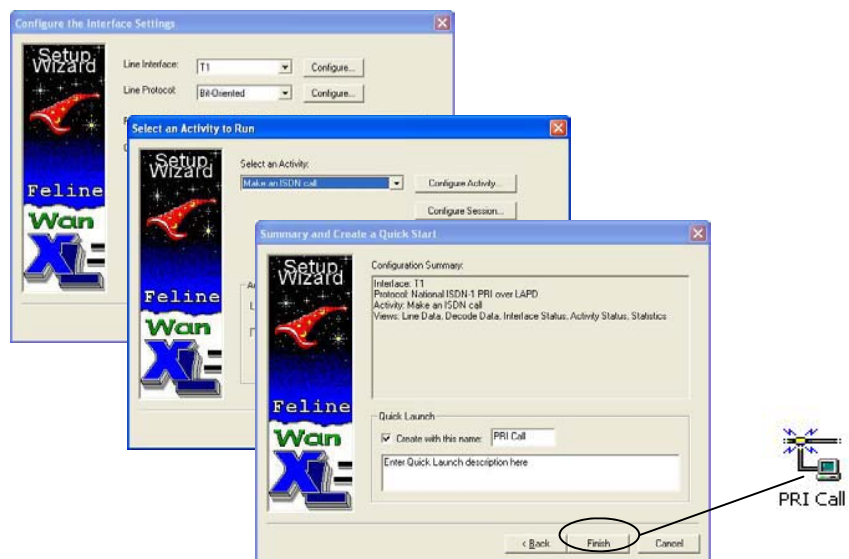
Key Features:

- Supports ParaScope Plus, ParaScope MP, ParaScope 2000/Probe, and ParaScope 3000/Probe hardware.
- Integrated real-time telecom and datacom network monitoring and troubleshooting with the easy-to-use Setup Wizard.
- Total control of RS-232, V.35/36, RS-449, RS-422/423, X.21, T1, VF/DTMF, E1, PRI, BRI, DS3, Frame Relay, GR-303, and SS7 networks.
- Provides Pass/Fail indicators, alarm logging, and 7-layer decodes.
- Decodes Frame Relay SS7 (ANSI and ITU), GR303, X.25, SNA, ISDN PRI/BRI, V5.x, TCP/IP Suite, Novell Suite, Appletalk Suite H.323 VoIP Suite, SDLC, HDLC, LAPB, LAPD, PPP, Async PPP, SLIP, and other protocols.
- Line Interfaces for async, character synchronous (sync), bisync, and bit oriented (HDLC-based).
- Real-time statistical analysis includes % utilization, frames/sec, throughput, frame size, errors, protocol specific, and more.
- Playback any captured, raw, or buffered data with exact original timing.
- Reporter generates user-defined session reports, which include statistical results, alarms, interface measurements, application results, and configuration settings.
- Bit Error Rate Testing with histogram and G.821 statistics and results. Includes round-trip-time measurement, error injection, loop code generation, and more.
- Frame Simulator generates data with user-defined % utilization, transmit, and idle period.
- Programming Editor makes it a easy to create syntax-error-free scripts, which provide real-time "if," "wait until," and other C-like high level program structures.
- Remote Operation over any Internet connection, available only with WanXL Software Suite & Maintenance. **Available only with Wan XL Suite & Maintenance.**
- Reporter generates user-defined session reports, which include statistical results, alarms, interface measurements, application results, and configuration settings. **Available only with Wan XL Suite & Maintenance.**

Setup Wizard—It couldn't be easier!

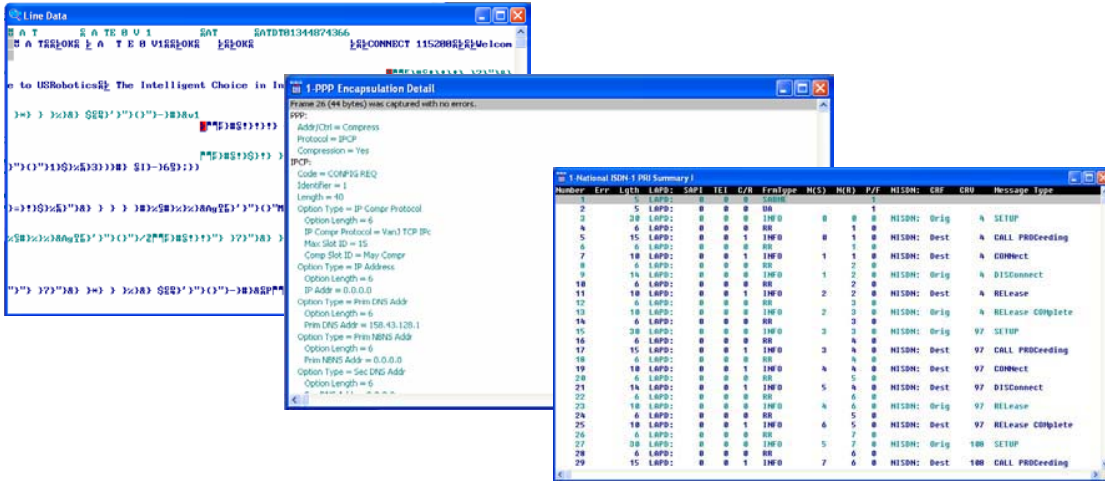
Hate to read an Owner's manual? No problem! Let WanXL's *Setup Wizard* quickly and easily walk you through creating the configuration for your required task.

Finish by creating a Quick-launch icon. This way you can launch any WanXL test application with just a "double-click."



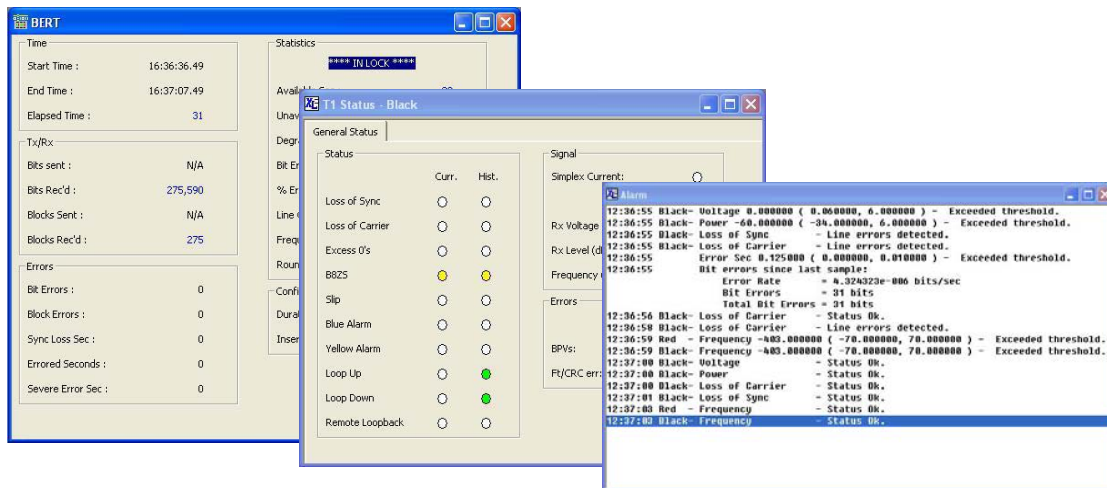
WanXL Analyzer Software

Display raw data in the Line data window or analyze the most intricate protocols with sheer ease and simplicity with Decode data views.



Bit error rate results provide a quick and simple assessment of communication line integrity. Measurements and result statistics are available in both a G.821 and histogram presentation. Industry standard patterns, round-trip-time measurement, user-defined error injection and more, add versatility.

Pass/fail indicators for frequency, amplitude and voltage measurements as well as framing and line code violation counts allow you to quickly qualify a communication span. Time-stamped alarm logging assures that no event will go undetected, even when you can't be on location.



Frederick Engineering, Inc.
832 Oregon Avenue, Suite M
Linthicum, MD 21090
USA



(P) 410-789-7890
(F) 410-789-7670
e-Mail: fe@fetest.com

www.fetest.com